

# PRINCE RUPERT HARBOUR

Scale 1:25 000 (1:47 900) Ed. 2010

**PROJECTIONS AND COORDINATES**  
The chart is based on the datum of the Canadian Geodetic Reference System of 1984 (CGRS84). The datum is based on the International Terrestrial Reference Frame (ITRF) of 1984. The datum is based on the International Terrestrial Reference Frame (ITRF) of 1984. The datum is based on the International Terrestrial Reference Frame (ITRF) of 1984.

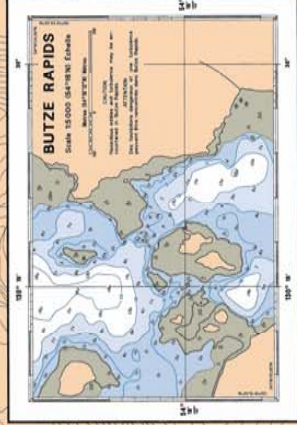
Latitude	Longitude
54° 00' N	123° 00' W
54° 05' N	123° 05' W
54° 10' N	123° 10' W
54° 15' N	123° 15' W
54° 20' N	123° 20' W
54° 25' N	123° 25' W
54° 30' N	123° 30' W
54° 35' N	123° 35' W
54° 40' N	123° 40' W
54° 45' N	123° 45' W
54° 50' N	123° 50' W
54° 55' N	123° 55' W
55° 00' N	124° 00' W

**SYMBOLS AND ABBREVIATIONS**  
The chart uses the following symbols and abbreviations:  
- **Lighted Buoy:** A buoy with a light on top.  
- **Unlighted Buoy:** A buoy without a light on top.  
- **Anchorages:** Areas where ships can anchor.  
- **Shoals and Rocks:** Areas of shallow water or rocks.  
- **Islands and Peninsulas:** Landmasses.  
- **Harbours and Bays:** Bodies of water.  
- **Channels:** Waterways between landmasses.  
- **Depth Soundings:** Numbers indicating water depth in meters.

## DIGBY ISLAND



## DELUSION BAY



## KA IEN ISLAND

**SYMBOLS AND ABBREVIATIONS**

Symbol	Description
(Symbol)	Lighted Buoy
(Symbol)	Unlighted Buoy
(Symbol)	Anchorages
(Symbol)	Shoals and Rocks
(Symbol)	Islands and Peninsulas
(Symbol)	Harbours and Bays
(Symbol)	Channels
(Symbol)	Depth Soundings

## FORPOST HARBOUR

## RIDLEY ISLAND

## TSIMPSEAN PENINSULA

## SMITH ISLAND

## FLORA BAY

## NOSEY BAY

## SMITH ISLAND

